

T. E. MURRAY.  
ELECTRIC BATH CABINET.  
APPLICATION FILED MAR. 11, 1914.

1,120,224.

Patented Dec. 8, 1914.

Fig. 1.

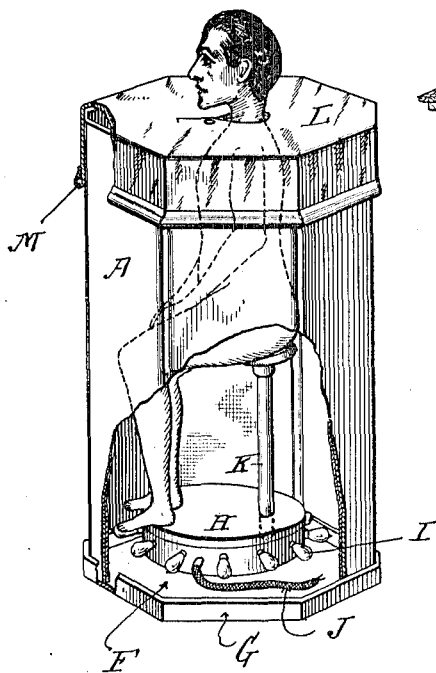


Fig. 2.

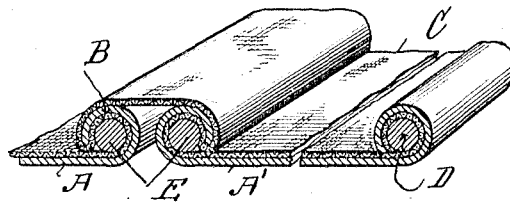


Fig. 3.

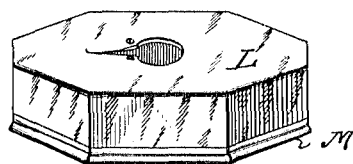
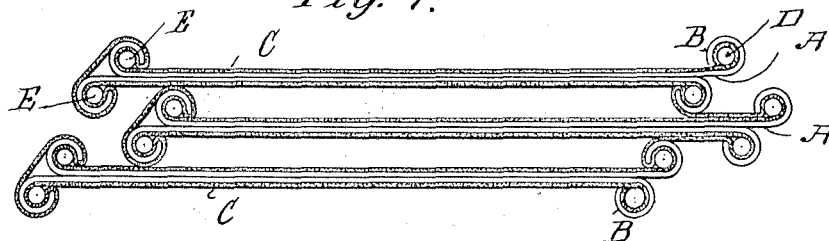


Fig. 4.



Witnesses:  
May T. Murray  
Gertrude W. Witter.

Inventor  
Thomas E. Murray  
By his Attorney  
Paul Benjamin

# UNITED STATES PATENT OFFICE.

THOMAS E. MURRAY, OF NEW YORK, N. Y.

ELECTRIC BATH-CABINET.

1,120,224.

Specification of Letters Patent.

Patented Dec. 8, 1914.

Application filed March 11, 1914. Serial No. 823,859.

*To all whom it may concern:*

Be it known that I, THOMAS E. MURRAY, a citizen of the United States, residing at New York, in the county of New York and State of New York, have invented a certain new and useful Improvement in Electric Bath-Cabinets, of which the following is a specification.

The invention is a folding electric bath cabinet, and has for its object to cheapen and simplify the construction. To this end, the wall of the cabinet is composed of a series of simple metal plates jointed together by means of a continuous lining of fabric—preferably canvas, felt or other good heat insulating material. The lining is secured in place by means of rods inserted in the curled over longitudinal edges of the sections, and hence without any rivets, or similar fastenings, which rods can be easily removed when it is desired to disassemble the sections or to replace the lining. The jointed sections are stood on end to form a polygonal compartment, and are retained within the upturned flange of a suitable base plate. On the base plate is a box—preferably cylindrical—in the circumferential wall of which glow lamps are socketed. The bather's seat is disposed on the box, so that the heat from the lamps rises around his body. The top of the cabinet is closed by a flexible hood, the overlapping edge of which is provided with a wire conforming in shape to the cross section of the cabinet wall.

In the accompanying drawings—Figure 1 is a perspective view of my bath cabinet, portions of the wall and hood being broken away. Fig. 2 is a transverse section of the joint between the sections and of the device for fastening the lining in the end sections. Fig. 3 is a perspective view of the hood. Fig. 4 is a transverse section of the wall sections when folded together.

Similar letters of reference indicate like parts.

The wall of the cabinet is formed of any desired number of sections A. Each section is a metal plate in parallelogram form having its opposite longitudinal edges curled over, as shown at B. In order to join the sections together, I provide a continuous lining C of felt, canvas or other suitable fabric. Said lining is secured at its ends to the free edges of the end sections of the series by being wrapped around a

metal rod D which is inserted in the tube formed by curling over said edge. The joint between two successive sections as A, A', Fig. 2, is formed by the lining which is secured by rods E, similar to rods D, and inserted in like manner in the tubes formed by curling over the edges of said sections. The plate sections being thus flexibly connected may be folded together for storage or transportation, as shown in Fig. 4, and occupy but small space.

When it is desired to use the cabinet, the connected sections are placed upon a polygonal base plate F inside of an upwardly turned flange G on said plate, and stand of themselves in proper position. On the base plate is a cylindrical box H, in the circumferential wall of which are sockets receiving glow lamps I supplied by conducting lead J, which may be passed through any suitable aperture. A standard K inserted in an opening in the top of box H supports a seat for the bather. The hood L is of canvas, or other fabric, of form to fit upon the wall sections and may be kept in shape by a bent wire M inclosed in a hem. An opening for the head of the bather is provided in the hood. It is to be noted that a ring of glow lamps is here disposed in the circumferential or inclosing wall of the box H which is on the base plate, so that the air heated by said lamps rises around the body of the bather who is seated on the box. If desired the surface of the base plate may be polished or otherwise made to reflect the lamp rays upward.

I claim:

1. A bath cabinet having its side walls formed of a plurality of plate sections, each plate having its opposite edge portions curled over, rods disposed in said curled over edge portions and a lining of fabric uniting said sections and engaged by said rods.

2. A bath cabinet having its side walls formed of a plurality of plate sections, a lining of fabric secured to said sections and uniting the same, a hood of fabric constructed to fit over said sections and a wire attached to the edge of said hood and conforming in shape to the polygonal cross section of the cabinet wall formed by said sections.

3. A bath cabinet, having its side walls formed of a plurality of successive sections, and a continuous lining of fabric detachably

secured at its ends to the outer edges of the end sections and having its body portion detachably secured at the meeting edges of all the sections, and free at the top and bottom edges of said sections.

4. A bath cabinet, having its side walls formed of a plurality of successive sections, a continuous lining of fabric free at the top and bottom edges of said sections and secured at its ends to the end sections, and means for securing the body portion of said

fabric at the meeting edges of all the sections; the said means being constructed to permit adjacent sections to be moved with reference to one another to vary the distance between them.

In testimony whereof I have affixed my signature in presence of two witnesses.

THOMAS E. MURRAY.

Witnesses:

GERTRUDE T. PORTER,  
MAY T. MCGARRY.